

## ENERGY EFFICIENCY

Thermal Transmission Coefficient

**Uw value from 1.3 (W/m<sup>2</sup>K)**

Please consult typology, dimensions and glazing

## ACCOUSTIC INSULATION

Maximum glazing: **30 mm**

Maximum acoustic insulation: **Rw = 41 dB**

## CATEGORIES ACHIEVED AT TEST CENTRE

Protection against atmospheric agents

Air permeability (EN 12207):

**Class 4**

Water tightness (EN 12208):

**Class 7A**

Wind resistance (EN 12210):

**Class C5**

Security Test: **PAS24**

**Passed**

Reference test: Balcony 1.23 x 1.55 m, 1 sash + 1 fixed

<b>SECTIONS</b>	Frame 116 mm Tri-rails 182 mm Sash 37 mm	<b>EXTRUSION ALLOY</b>	6063 T-5
<b>PROFILE THICKNESS</b>	Door 1.7 mm	<b>POLYAMIDE STRIP LENGTH</b>	Polyamide 6.6 reinforced with 25% fiberglass from 16 to 24 mm
<b>MAXIMUM DIMENSIONS</b>	Width (L) = 2.500 mm Height (H) = 3.000 mm	<b>OPENING POSSIBILITIES</b>	Sliding Possibility of 1, 2 or 3 rails Possibility of interior and exterior corner at 90° without mullion Galandage
<b>MAXIMUM WEIGHT/SASH</b>	320 Kg		
Please consult regarding maximum weight and dimensions according to types			
<b>DRAINAGE</b>	Optionally drainage system and drainage grid made of stainless steel		

## FINISHES

Colour powder coating  
(RAL, mottled, rough...)

According to Qualicoat >60 micras

Wood effect powder coating

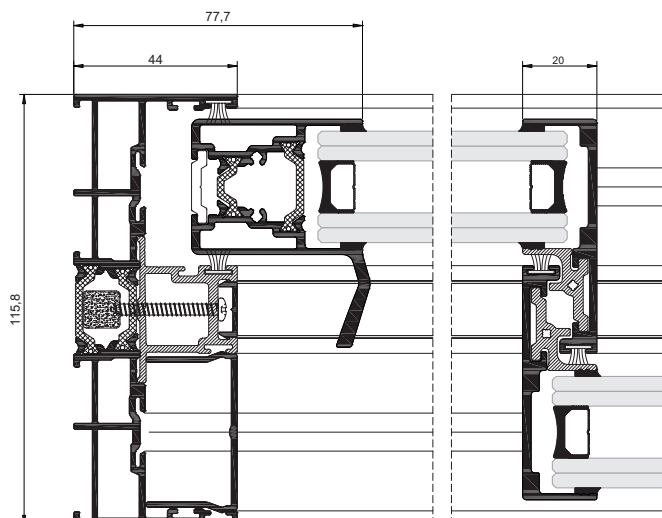
According to Qualideco standard

Anodized

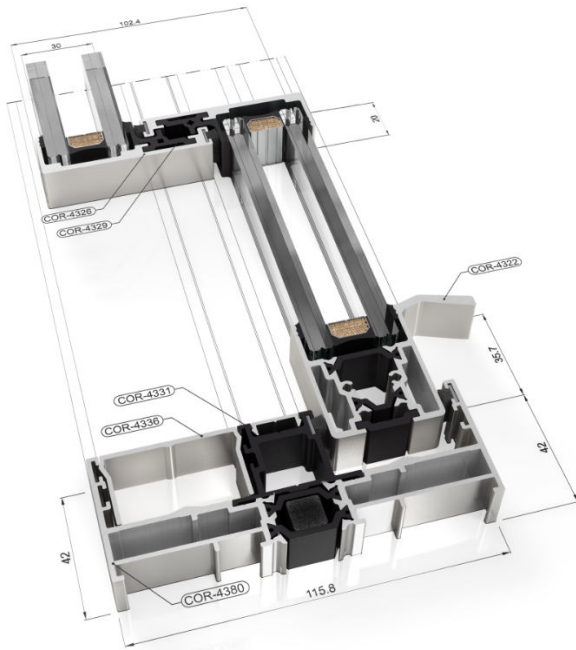
According to Ewwa Euras  
Standard Class 15

Optionally Class 20 and 25

Optionally bicoloured



## SLIDE OVERVIEW



Maximum Panels: 6 Bi-Parting/ 3 Uni-directional or Pocketing

Maximum Panel Width: 2.5m

Maximum Panel Height: 3m

Frame Depth:

2 Track = 115mm

3 Track = 278mm

Frame Width: 51mm

Maximum Glazing Thickness: 30mm

Configurations: Stack, Multi-Slide Pocket

## OPENING POSSIBILITIES

Sliding of 1, 2, 3, 4, & 6 sashes

Possibility of 1, 2, or 3 tracks

Possibility of interior and exterior corner sash at 90° without mullion

Pocket openings in 1, 2, 3, & 4 sashes

